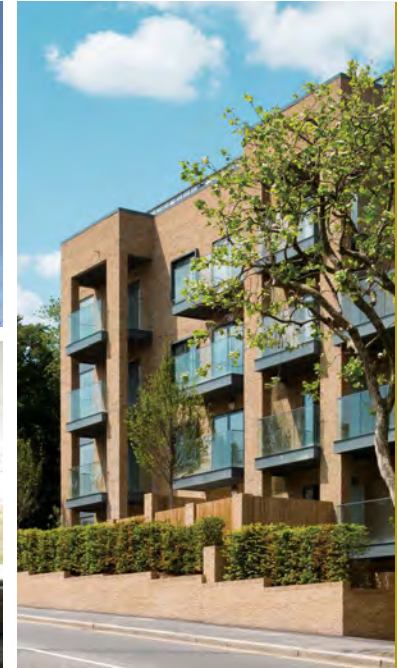


R. J. BARWICK



[Company](#)

[History](#)

[Project Leadership](#)

[Project Recovery](#)

[Dispute Management](#)

[Interim Management](#)

[Contact](#)

R . J . B A R W I C K



[Company](#)

[History](#)

[Project Leadership](#)

[Project Recovery](#)

[Dispute Management](#)

[Interim Management](#)

[Contact](#)

Company

RJ Barwick was established as a family construction business in 1874.

For over 130 years the company traded as a main contractor, but now we provide management services to clients who are comprised of housing associations and local authorities.

- Project Management
- Construction Management
- Project Recovery
- Dispute Management
- Interim Management

The company is led by Richard Barwick and supported by an experienced and highly skilled team of qualified people.

We are here to help, providing a professional, tailored approach designed to meet the needs of our customers.

R. J. BARWICK



Early 20th century Staff day out

[Company](#)

[History](#)

[Project Leadership](#)

[Project Recovery](#)

[Dispute Management](#)

[Interim Management](#)

[Contact](#)

History

We are proud of our history, but times move on, and this business has changed too.

As a main contractor, RJ Barwick was based in Dover, building across the South East during the 19th and 20th centuries. Primarily the contracts were in the housing, health and education sectors.

Following the transition to a management specialist in 2010, our principal area of activity has become the residential sector in the South, London and the East Midlands.

R. J. BARWICK



Merstham Regeneration Market sale homes

[Company](#)

[History](#)

[Project Leadership](#)

[Project Recovery](#)

[Dispute Management](#)

[Interim Management](#)

[Contact](#)

Project Leadership

RJ Barwick is a professional, proactive and highly experienced construction and project manager.

Here to help, whatever the circumstances. We remain discreet and flexible, and able to step in to support customers on either a short term or long term basis.

In the last five years, multiple schemes have been completed around London, and from Brighton to Nottingham.

R. J. BARWICK



[Company](#)

[History](#)

[Project Leadership](#)

[Project Recovery](#)

[Dispute Management](#)

[Interim Management](#)

[Contact](#)

Project Recovery

RJ Barwick is sometimes asked to become involved in projects that have not gone as intended.

Whatever the circumstances behind the situation, we inevitably find that continuity on site has suffered, with subcontractors and suppliers out of sequence. Delays ensue, costs rise, cash flow stutters, and a hands-on management approach is essential in such circumstances.

R. J. BARWICK



[Company](#)

[History](#)

[Project Leadership](#)

[Project Recovery](#)

[Dispute Management](#)

[Interim Management](#)

[Contact](#)

Dispute Management

RJ Barwick is very practised at taking the client lead on contract claims and disputes.

It is impossible to resolve every detail and to foresee every contingency at the outset, and sometimes situations arise where a claim or dispute develops.

We help building owners, usually by providing the professional management of adjudication claims.

R. J. BARWICK



Gosport Towers Replacement of external wall insulation

[Company](#)

[History](#)

[Project Leadership](#)

[Project Recovery](#)

[Dispute Management](#)

[Interim Management](#)

[Contact](#)

Interim Management

RJ Barwick have provided construction and project management roles on an interim arrangement.

We work with housing associations and local authorities, usually while they wait to place a permanent role.

This service can be provided on a short term, medium term or project specific basis.

R. J. BARWICK



Richard Barwick
Managing Director



Park Royal Extra Care Scheme

Company

History

Project Leadership

Project Recovery

Dispute Management

Interim Management

Contact

Contact

RJ Barwick Ltd operates from offices in Ashford, Kent and Clerkenwell in London.

Please contact us by e-mailing:

- office@rjbarwick.co.uk
- or telephoning:
- 020 3011 0280